



Manufacturing ERP

# IQMS Quality Management System

Combining ERP and Quality to Power Your Company

## Improving Quality Processes

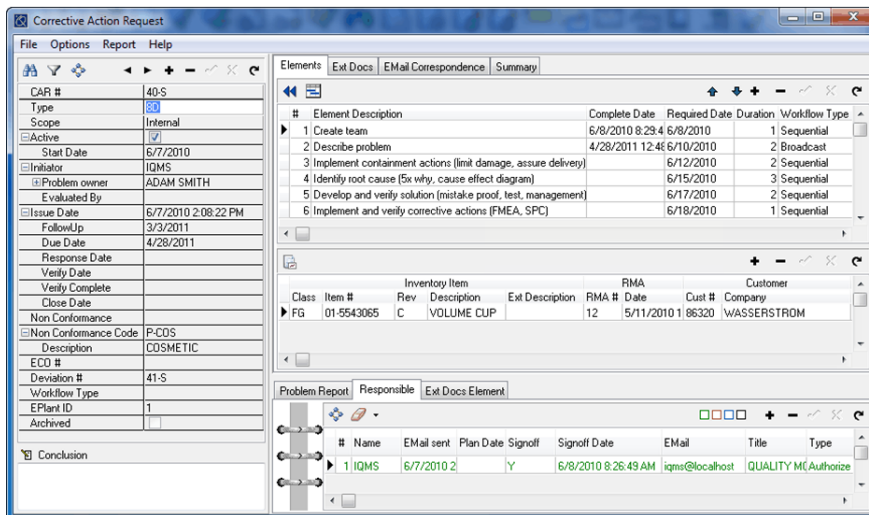
The Quality Management System (QMS) within IQMS provides a systematic approach to meeting all your quality needs. It supplies the tools and capabilities necessary to ensure customer satisfaction and compliance with the most stringent quality standards, including automotive (TS), medical (FDA, 21 CFR Part 11) and ISO standards.

The IQMS QMS gives direct access to all ERP-related information with no redundant data entry. Areas such as RMAs, non-conforming inventory, BOMs and much more are all available for linking. Experience the power of a truly embedded quality system as you eliminate duplicate entries and reduce errors, which in turn cuts costs, saves time and increases communications across your supply chain.

Increase visibility and improve reaction time by pushing the data to those who need it using secure, electronic signatures and approvals. IQMS automatically evaluates workflow status and sends email notifications to internal and external team members, expanding your quality team beyond your four walls to include customers and suppliers in the review and authorization process.

## Benefits

- Reduce the cost of quality management
- Ensure timely process tracking with automated workflow
- Eliminate maintenance of third party solutions
- Enhance decision making based on readily accessible SPC data analysis, including automatic CMM data import capabilities
- Improve auditing capabilities
- Enhance communication with employees, customers and suppliers
- Directly access all ERP functionality
- Decrease time spent on audits



Corrective Action and other Quality modules support task information, instructions per step, team member assignments and Gantt chart completion tracking capabilities.

*"Not only is it a complete module in terms of function, but it has the added benefit of being part of the ERP system."*

-Donatelle

*"Simply put, the IQMS Quality System is extremely comprehensive and very user friendly."*

-Supreme Corq

# IQMS Quality Management System

## Key Features

**Secure Document Control-** Go paperless and maintain complete control over the lifecycle of documents, from creation through approval, implementation and obsolescence.

**Corrective Action Requests (CARs)-** Define, manage, schedule, assign and track CARs to help ensure compliance and meet customer/supplier requirements.

**Engineering Change Orders (ECOs)-** Control revisions to item numbers and track changes to BOMs, routings and equipment.

**Advanced Product Quality Planning (APQP), Failure Mode and Effects Analysis (FMEA) and Production Part Approval Process (PPAP)-** Streamline product launches. Customizable templates for the automotive industry are included.

**Corrective Actions Preventive Actions (CAPAs), Product and Process PQ, Risk Assessment-** CAPA, PQ and Risk Assessment tools help you meet FDA requirements. Customizable templates for medical device manufacturing are included.

**Statistical Process Control (SPC)-** Key in data or input automatically from serial devices. Access and evaluate data while machines operate with real-time control charts. Supported charts include X-bar-R, X-MR, p-np and histograms as well as capability analysis with Cpk and Ppk.

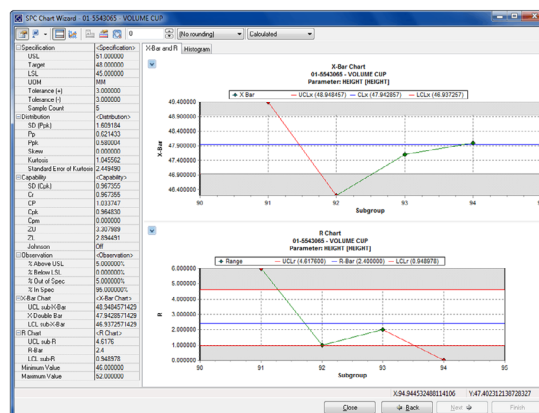
**Coordinate Measuring Machine (CMM) Interface-** Automatically import CMM data directly into the SPC module

**Deviation, Material Review Board and NCMR-** Track all non-conformances and maintain complete audit trails.

**Gage Repeatability and Reproducibility (R&R) Calibration-** Track, maintain and perform calibrations on gages and devices. Conduct Measurement System Analysis with R&R studies.

**Quick Inspections-** Create pre-set inspection requirements, allowing operators to enter the data directly into IQMS through ShopData, FabData, RealTime or via a PDA.

**Additional Features-** Complaint tracking, quality auditing, lot tracking and cost of quality.



*Workflow ensures that projects are completed on time, whether team members are local or remote.*