



Manufacturing ERP

# IQMS Product Lifecycle Management

Combining ERP and PLM to Streamline Product Development

## Design, Manufacture, Maintain

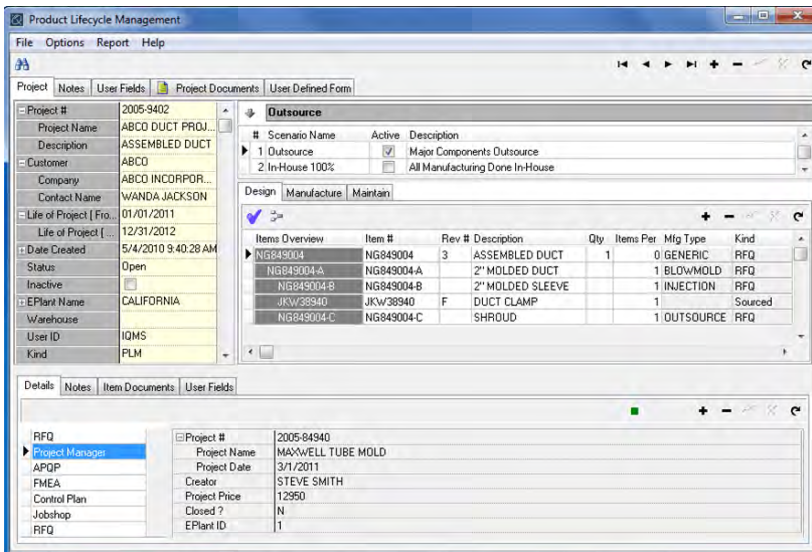
The Product Lifecycle Management (PLM) module in IQMS provides the ability to track products from the design and quoting process through production and the end of the life of the product. By tightly controlling processes, users can go lean, reducing development time and costs while ensuring customer satisfaction.

The introduction of a product is not confined to internal procedures and processes. To stay competitive, companies must utilize their global supply chain to bring products to market quickly, efficiently and cost effectively, with guaranteed customer satisfaction. Using email and web-based workflow tools, Product Lifecycle Management promotes open communication with suppliers and customers through all stages of the lifecycle.

Tired of redundant data entry? Access all ERP-related information directly from PLM, including links to quotes, APQP/PQ, FMEA, PPAP, tooling SPC, CRM, corrective actions and more. The PLM module from IQMS provides the right set of tools for managing your business.

## Benefits

- Reduce cycle time from concept to delivery
- Streamline process tracking and approvals with automated workflow
- Save costs and eliminate redundant activity by referring to historical lifecycles of similar products
- Provide the link between design activities and ERP
- Increase readily available information with one tracking screen



Easy to use graphing tools tell you everything you need to know about the life of the product.

*"It's great to have a system that links together my design and engineering activities with my production activities. It has saved us time and offers more convenience for future projects."*

*- Miniature Precision Components*

## IQMS Product Lifecycle Management

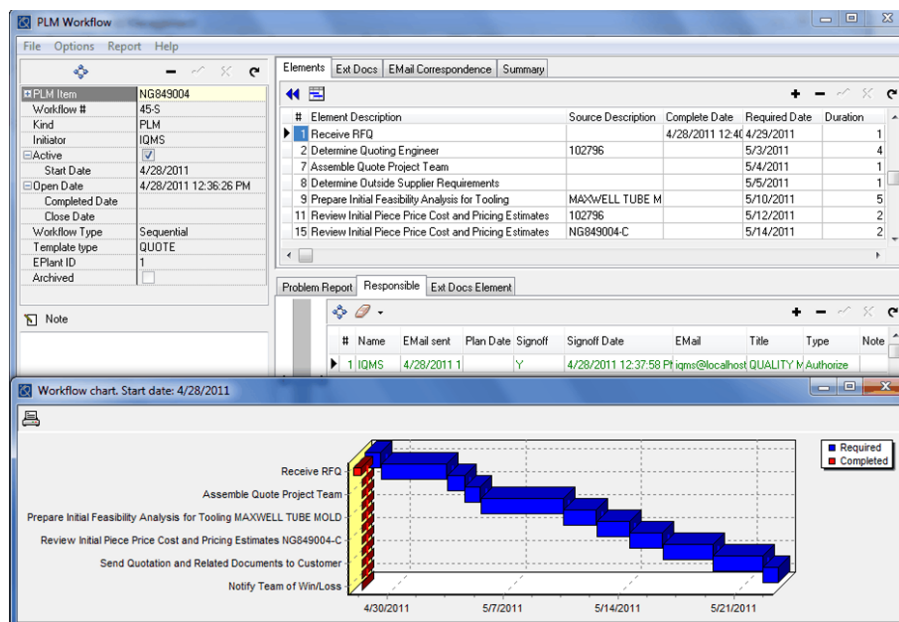
### Key Features

#### Design Process:

- Create PLM items and sub-items that do not affect the master inventory until a quote is converted to a Bill of Material (BOM)
- Define multiple scenarios for quotes (i.e. different materials, tooling, subcontractors, etc.)
- Import a BOM from CAD systems and attach CAD-type drawings to the PLM file
- Create assembly and individual part quotes directly from PLM
- Easily convert quotes to a BOM when the project is awarded
- Links to APQP/PQ, FMEAs and Control Plans ensures all data is accessible from PLM
- Collect SPC data on sample products

#### Manufacture/Maintain:

- Maintain PLM history when a BOM is automatically created at quote conversion
- Link information associated with the manufacture of products such as number of rejects, engineering change information, process cost information, deviations and order releases
- Link directly to lot and SPC data for each production run
- Monitor Corrective Actions for each item in the PLM
- Maintain history of customer calls, RMAs, profit/loss reports and much more
- Tie in Material Review Board (MRB) activity
- Monitor raw material supplier and outsource vendor activities
- View pie charts, bar diagrams and more



*Workflow ensures that projects are completed on time, whether team members are local or remote.*