

Outsource Central

Sub-Contract Tracking and Processing in IQMS

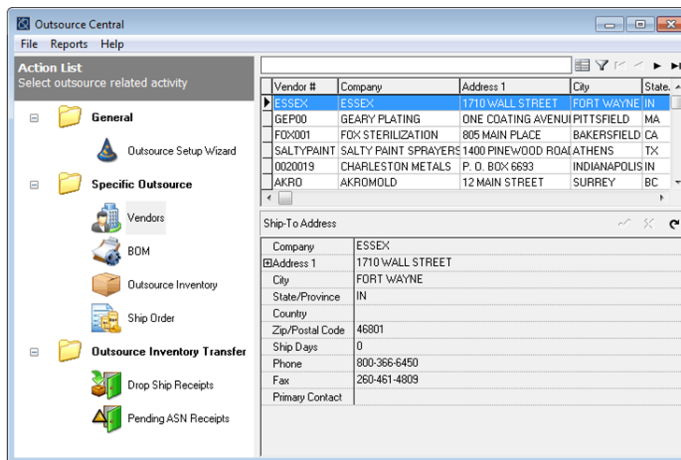
Painlessly Manage Outsource Items and Documents

Gain greater control over your supply chain with IQMS's Outsource Central module. Designed to effortlessly create and track sub-contracted items, the outsource inventory management software provides all the tools you need to setup, plan, manage, ship and track your sub-contracted products. All aspects of the progression are handled from one central module within the IQMS system.

A simple five step wizard guides you through setup, including vendor, work center, outsource item, Bill of Material (BOM) and ship to location selection. From there, track shipping orders, check on inventory in-transit location details, view vendor rejects, track progress and much more with intuitive jump-to functionality. When required, information can be transmitted through electronic data interchange (EDI) to create purchase order demand and advanced shipping notifications. With all the tools you need in one place, Outsource Central makes tracking outsource orders painless.

Benefits

- Automatically "consume" raw materials at supplier locations
- Track supplier rejects and scrap
- Gain greater control over your supply chain
- Process drop shipments and ASNs automatically
- Assign inventory to an in-transit location for traceability
- Utilize the vendor drop shipment capability
- View progress details with intuitive jump to functionality



A simple five step wizard guides you through setup. Start by selecting or creating a vendor, work center, outsource item and outsource BOM, then finish the setup process by choosing a ship to address. Simple!

Outsource Central

Key Features

Setup Wizard- A five step user-defined setup wizard walks users through the outsource order, starting with vendor, work center, outsource item and BOM selection and finishing with a ship to address.

Routing Diagrams- Visual routing diagrams show all steps involved in the process for functional viewing of product requirements and availability.

Automatic Production Demand- Based on the outsource BOM or as demand is needed, work orders are automatically created and ship orders are updated, eliminating additional manual entry because Outsource Central is linked to the rest of the ERP system.

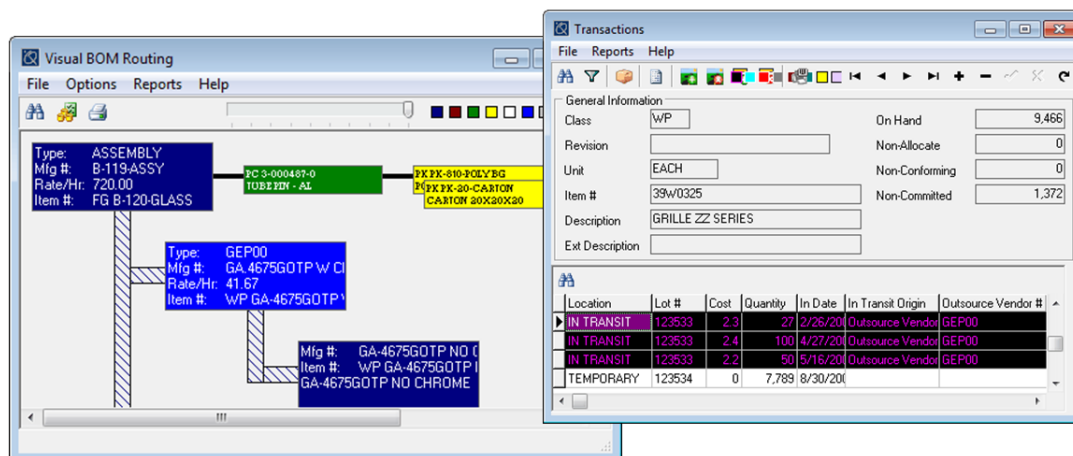
In-Transit Locations- Once packing slips are posted, the product/inventory is assigned to an in-transit location to allow for easier tracking and accountability at each step.

Reject and Scrap Reporting- Efficiently track reject or scrap items consumed at outsource vendors so that inventory counts remain true and costing is accurate.

EDI Communication- Electronic data exchange between the vendor or with the end customer for drop shipments and advanced shipping notifications is included and makes processing easy.

Product Traceability- Tie the final receipt to the original shipping transaction for lot and serial traceability and more visible accountability.

Drop Shipment Tracking- Vendor drop shipments are completely supported, allowing you to track your product from one vendor to the next without having to first return it to your warehouse.



Visual routing diagrams show all the steps in the process for a view of product requirements and availability.

Use pick tickets or packing slips to ship items. Once posted, the items are placed in an in transit location and parts cannot be added for removed since the location is locked.