



EnterpriseIQ Project Manager

Tracking Capital Projects Within ERP

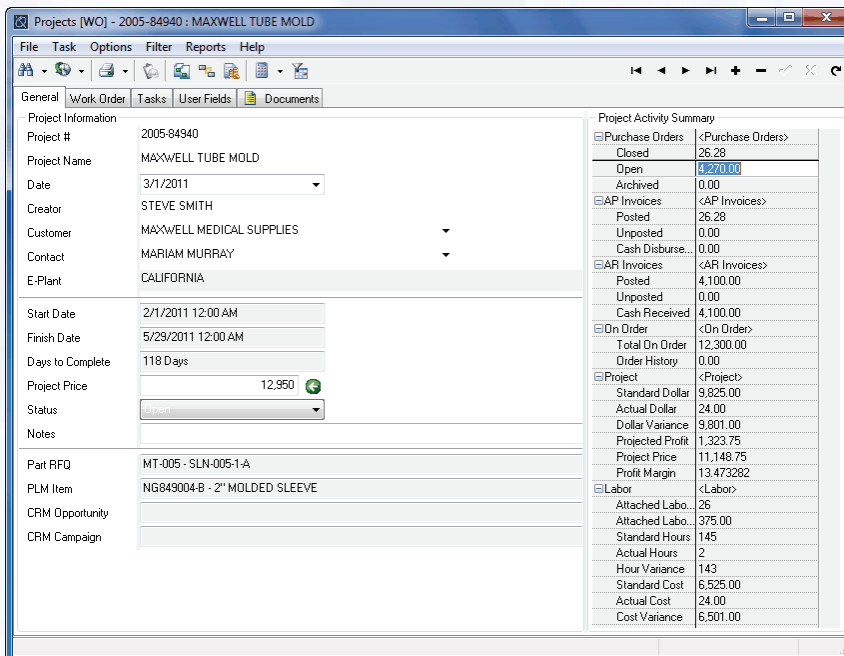
Improving Management and Tracking of Projects

Thanks to EnterpriseIQ Project Manager, project administration and tracking of capital equipment projects, such as tooling, has become considerably easier. Project Manager offers comprehensive support for all stages of a project — from initiation, planning and quoting to project execution and completion. Creating a task structure, assigning responsibilities, scheduling resources, defining deliverables and reporting progress involves a complex web of tasks and a myriad of challenges that are simplified with EnterpriseIQ Project Manager. Project Manager also gives you the tools to quickly analyze costs and prevent projects from getting out of control.

EnterpriseIQ Project Manager is embedded in the ERP system and has links to Quoting, Inventory, Purchasing, Time & Attendance, Preventative Maintenance (PM), Product Lifecycle Management (PLM) and to the financial system (AR/AP), tying all areas of a project together in a concise way. This allows analysis of the profitability of tooling and other machinery during the lifetime of that equipment.

BENEFITS

- Track projects easily with one comprehensive tool (i.e. tooling)
- Easily analyze both internal and outsourced projects
- Save time and reduce errors by cloning existing projects
- Track projects from quote creation through work order completion
- Receive up-to-date financial status on all projects
- Track actual costs versus budget
- Provide direct links to labor reporting, inventory, PM, PLM, accounting and purchasing
- Support multi-level tasking with financial roll up for task-by-task detail tracking
- View the project schedule in Gantt charts



"EnterpriseIQ's Project Manager module has allowed us to shorten the month-end project accounting from one week to one day."

-Sturgis Molded Products

"I like how we can see all the tasks for a project, with their status, in one concise report and all costs on one screen."

-PCI

EnterpriseIQ Project Manager

Key Features

Track Any Type of Project – Any type of project, such as tool building, can be tracked. User-defined tasks and project templates allow for detail to be tracked to any level desired. The cloning of projects also saves time and effort in the project setup.

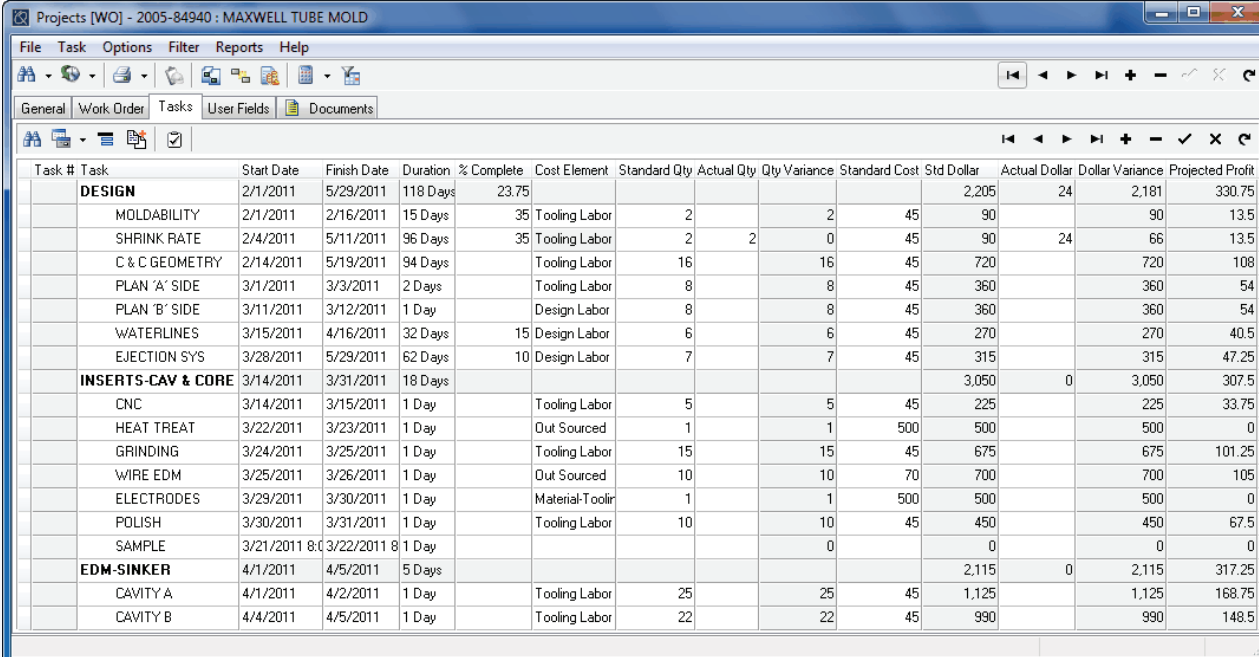
Maintain Project Archives – As projects are completed, they can be archived and removed from the active project list. All archived projects can be cloned, viewed onscreen or accessed by reports so history is maintained.

Assign Labor – Multiple ways to assign labor (Time & Attendance, quick add labor time cards, direct labor add) allows you to select the most efficient method of reporting labor to each task/project and ensures that all labor is accounted for.

Consume Inventory – Items from the main EnterpriseIQ inventory module (or miscellaneous items) can be assigned to projects and consumed from inventory as the project progresses. As with all inventory items in EnterpriseIQ, a complete history, including lot and price tracking, is maintained.

Track Project Cost Activity – The Activity Summary provides a complete picture of cost activity against the project, including standard versus actual costs, projected profit, profit margin, purchase orders, AP/AR and labor usage with single click drill-down to the details.

Project Timeline Tracking (Gantt Charts) – Tasks can be set up with start and end dates and tracked by percent completion to allow for quick views of project Gantt charts on the screen.



Task #	Task	Start Date	Finish Date	Duration	% Complete	Cost Element	Standard Qty	Actual Qty	Qty Variance	Standard Cost	Std Dollar	Actual Dollar	Dollar Variance	Projected Profit
	DESIGN	2/1/2011	5/29/2011	118 Days	23.75						2,205	24	2,181	330.75
	MOLDABILITY	2/1/2011	2/16/2011	15 Days	35	Tooling Labor	2		2	45	90		90	13.5
	SHRINK RATE	2/4/2011	5/11/2011	96 Days	35	Tooling Labor	2	2	0	45	90	24	66	13.5
	C & C GEOMETRY	2/14/2011	5/19/2011	94 Days		Tooling Labor	16		16	45	720		720	108
	PLAN 'A' SIDE	3/1/2011	3/3/2011	2 Days		Tooling Labor	8		8	45	360		360	54
	PLAN 'B' SIDE	3/11/2011	3/12/2011	1 Day		Design Labor	8		8	45	360		360	54
	WATERLINES	3/15/2011	4/16/2011	32 Days	15	Design Labor	6		6	45	270		270	40.5
	EJECTION SYS	3/28/2011	5/29/2011	62 Days	10	Design Labor	7		7	45	315		315	47.25
	INSERTS-CAV & CORE	3/14/2011	3/31/2011	18 Days							3,050	0	3,050	307.5
	CNC	3/14/2011	3/15/2011	1 Day		Tooling Labor	5		5	45	225		225	33.75
	HEAT TREAT	3/22/2011	3/23/2011	1 Day		Out Sourced	1		1	500	500		500	0
	GRINDING	3/24/2011	3/25/2011	1 Day		Tooling Labor	15		15	45	675		675	101.25
	WIRE EDM	3/25/2011	3/26/2011	1 Day		Out Sourced	10		10	70	700		700	105
	ELECTRODES	3/29/2011	3/30/2011	1 Day		Material-Toolir	1		1	500	500		500	0
	POLISH	3/30/2011	3/31/2011	1 Day		Tooling Labor	10		10	45	450		450	67.5
	SAMPLE	3/21/2011	3/22/2011	1 Day					0		0		0	0
	EDM-SINKER	4/1/2011	4/5/2011	5 Days							2,115	0	2,115	317.25
	CAVITY A	4/1/2011	4/2/2011	1 Day		Tooling Labor	25		25	45	1,125		1,125	168.75
	CAVITY B	4/4/2011	4/5/2011	1 Day		Tooling Labor	22		22	45	990		990	148.5